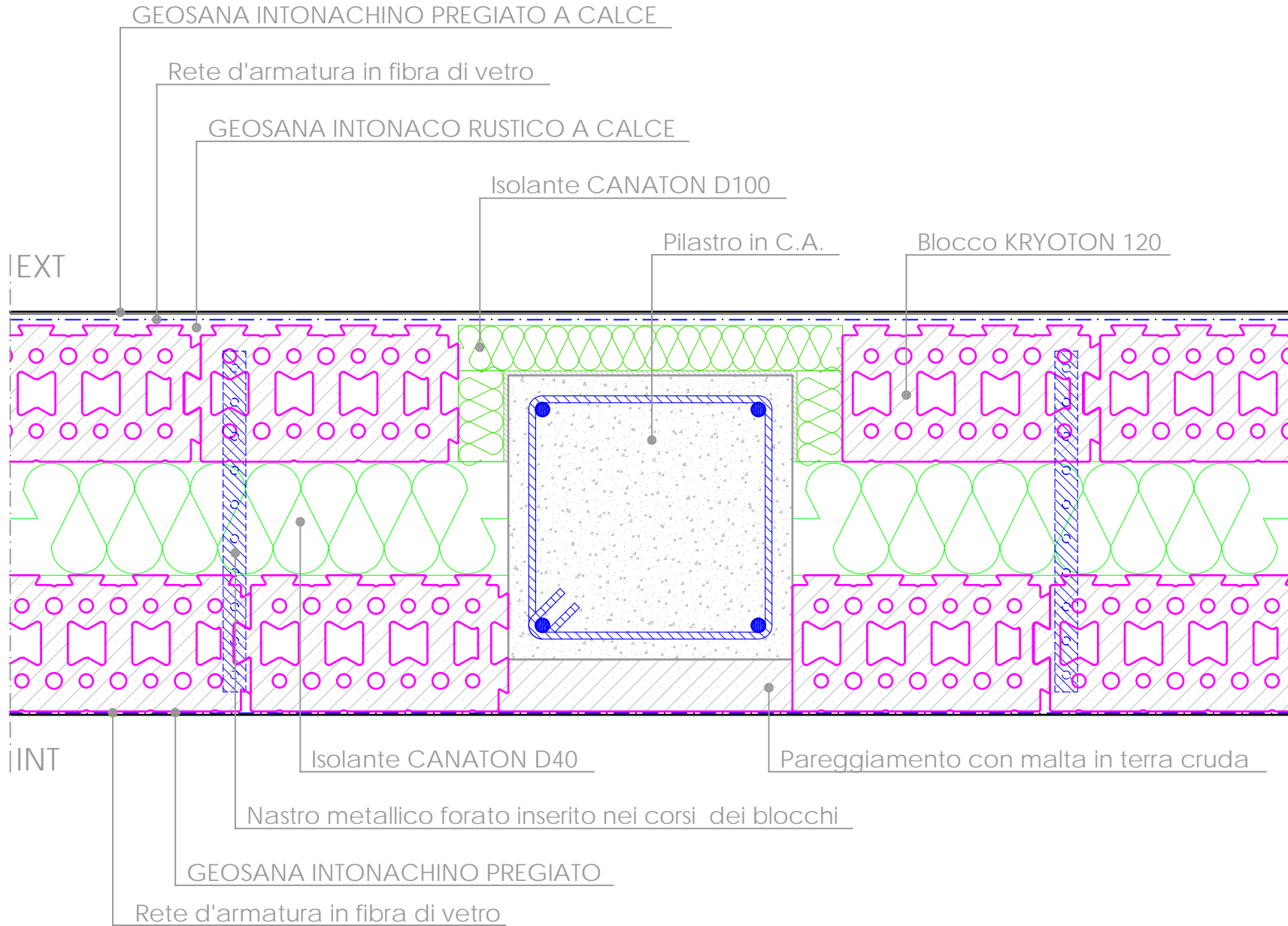
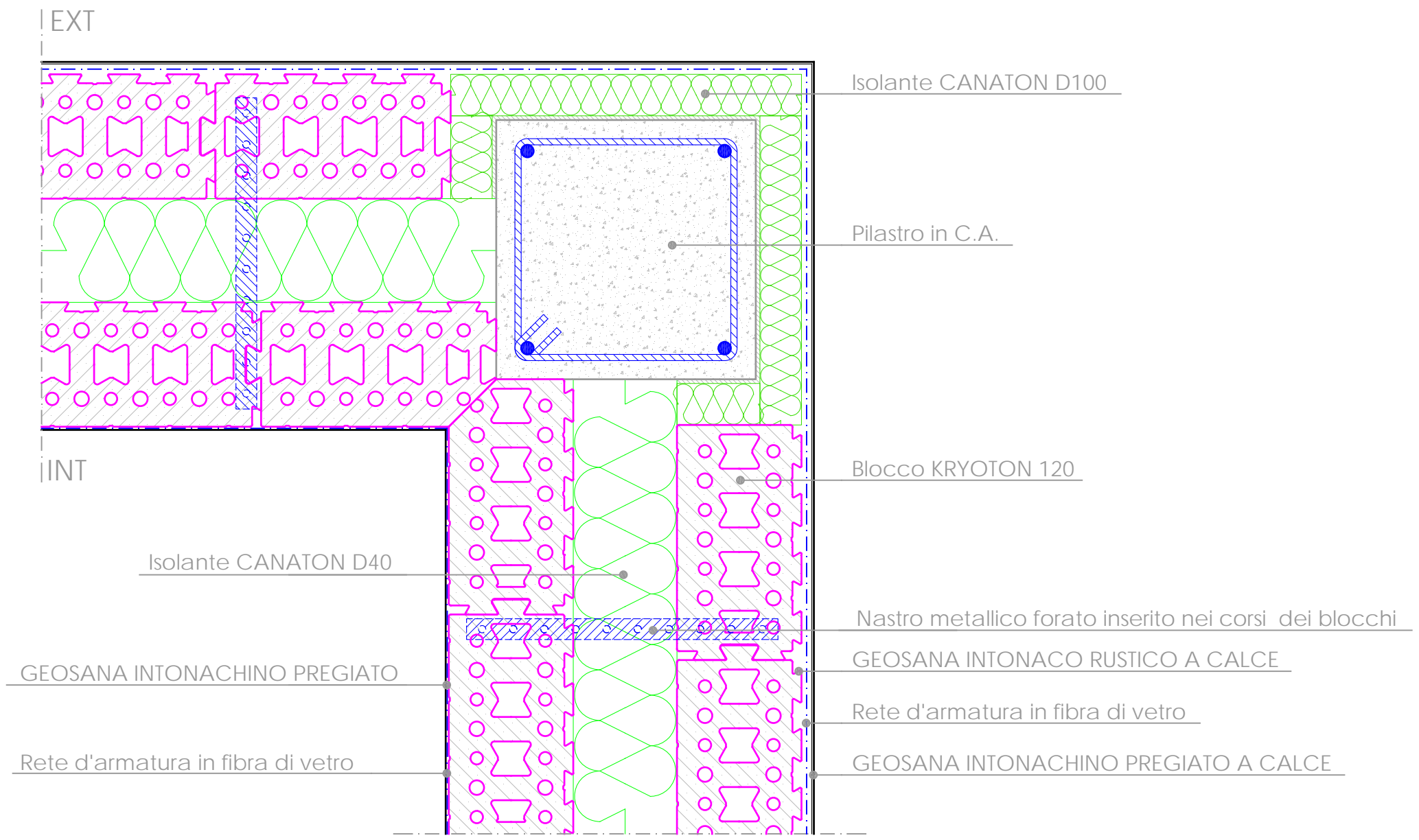


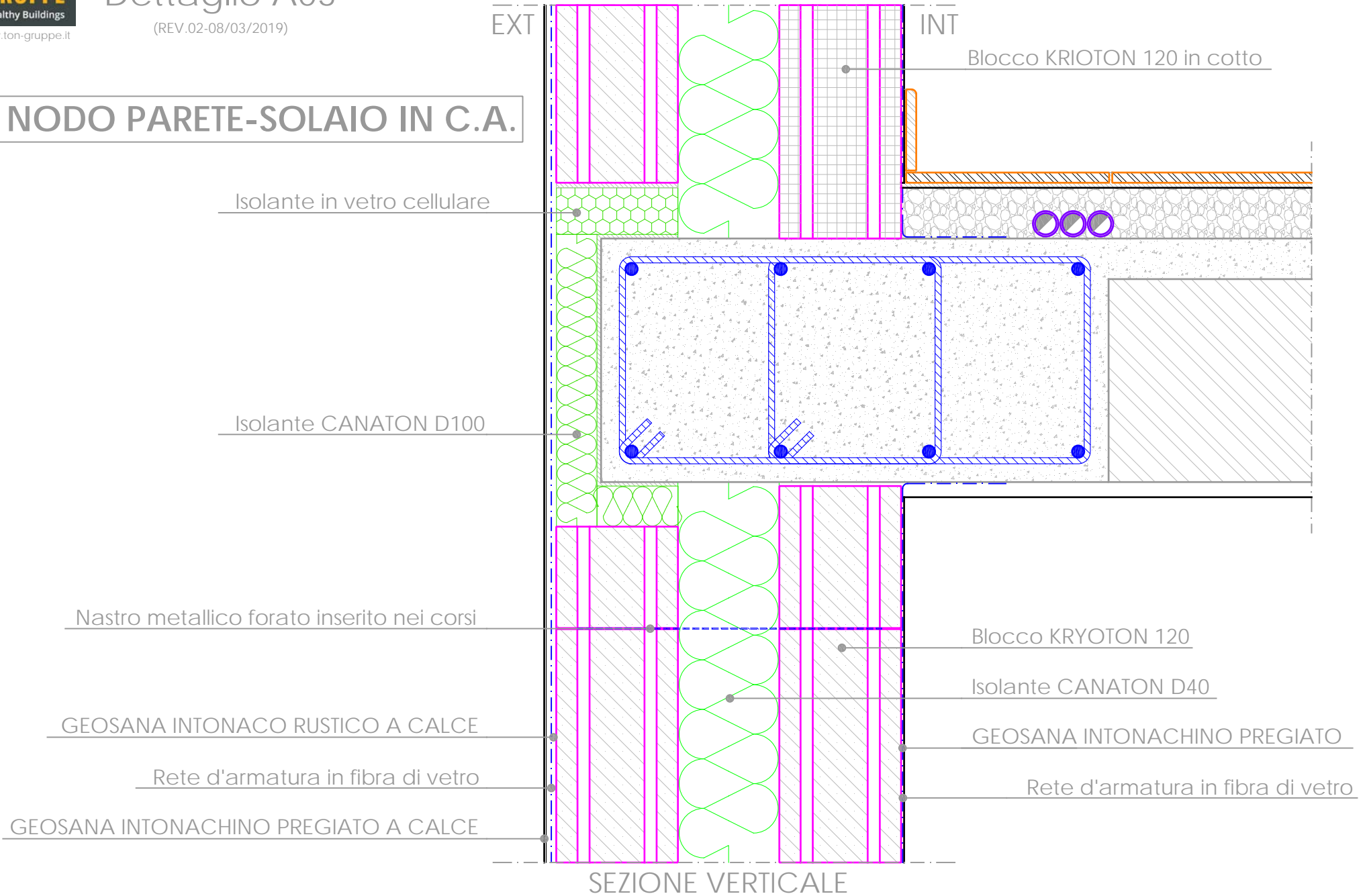
NODO PARETE-PILASTRO IN C.A.



NODO PARETE-PILASTRO IN C.A.



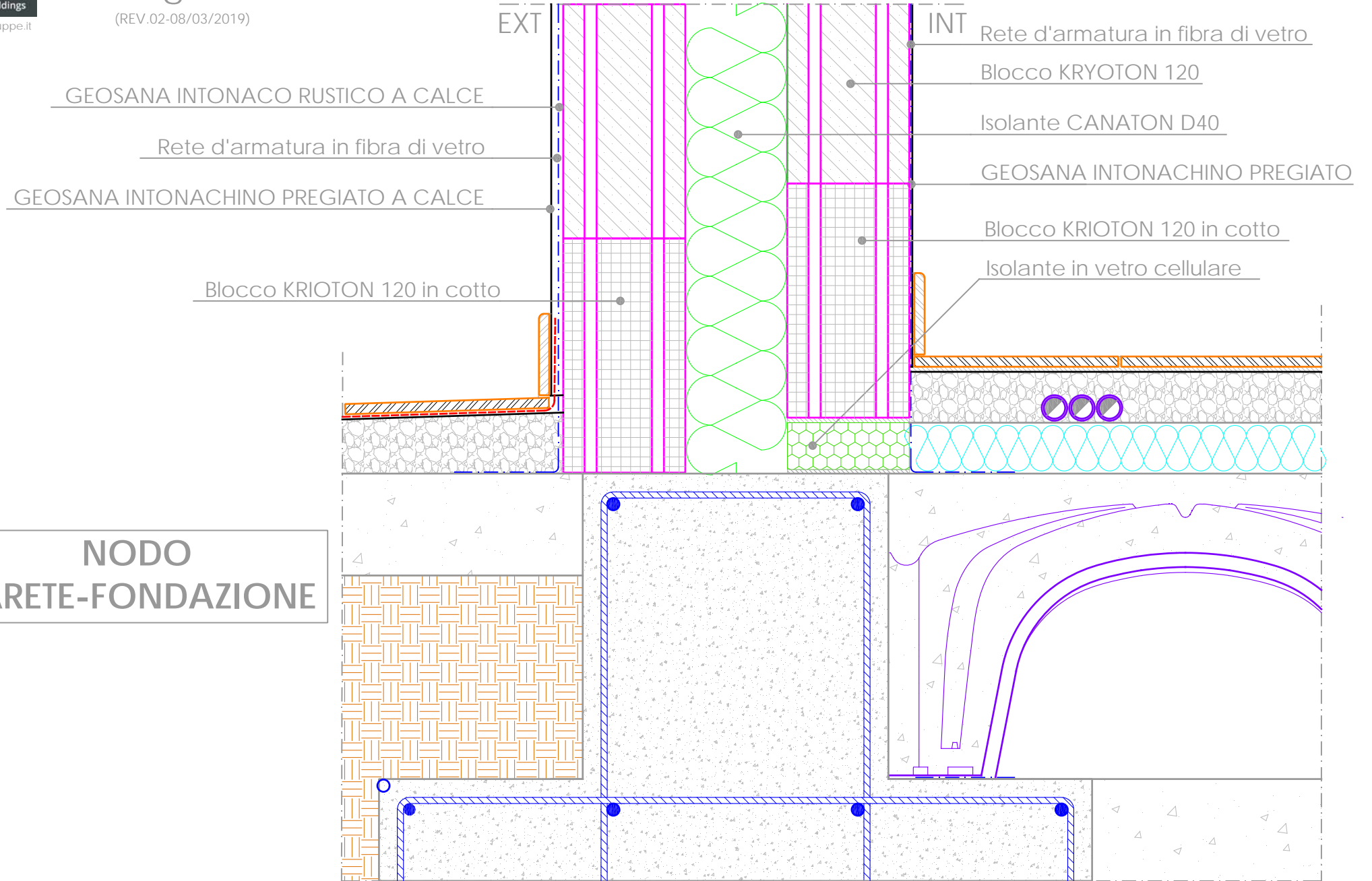
NODO PARETE-SOLAIO IN C.A.



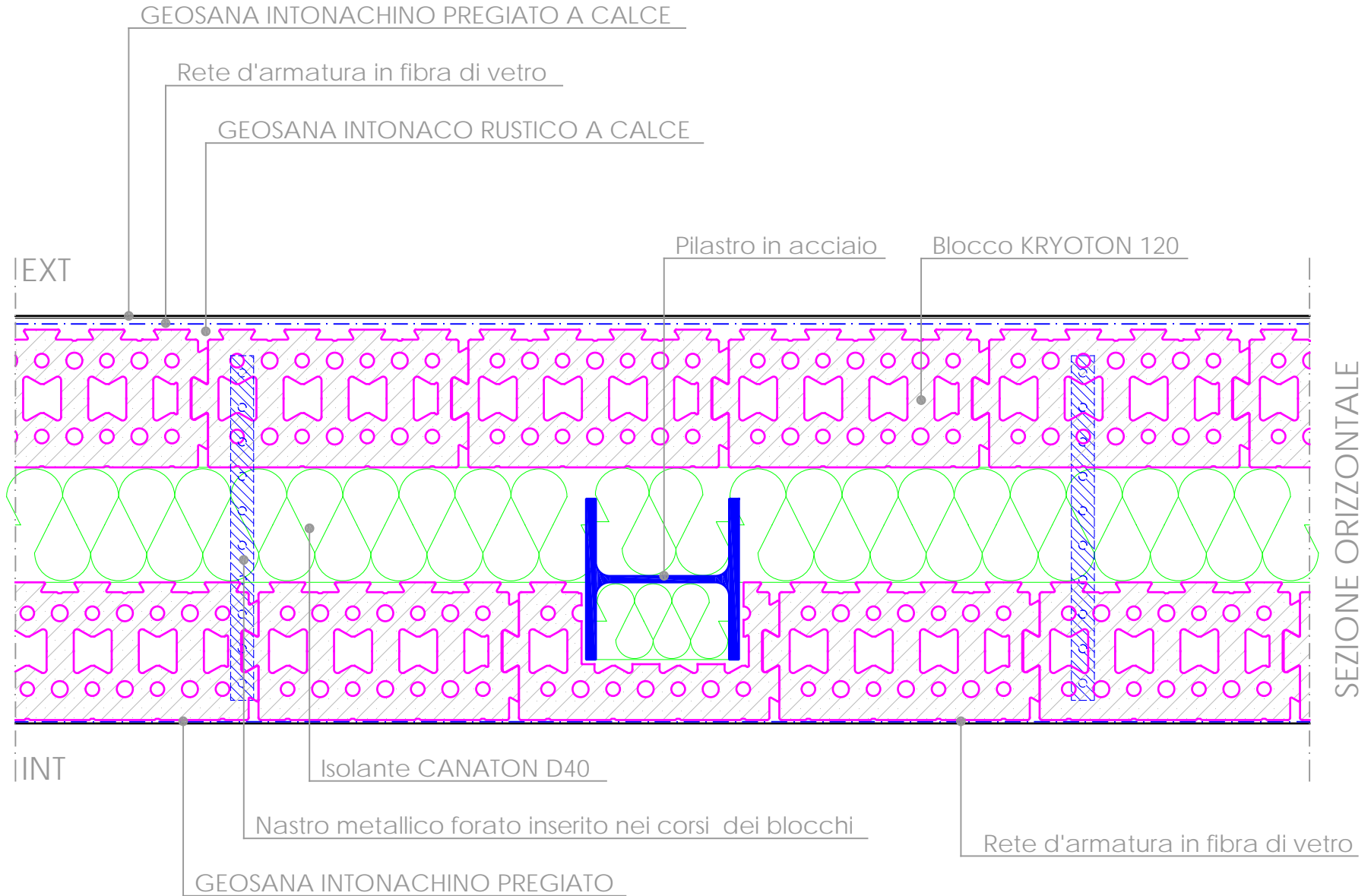
PARETE ATTIVA

Dettaglio A04

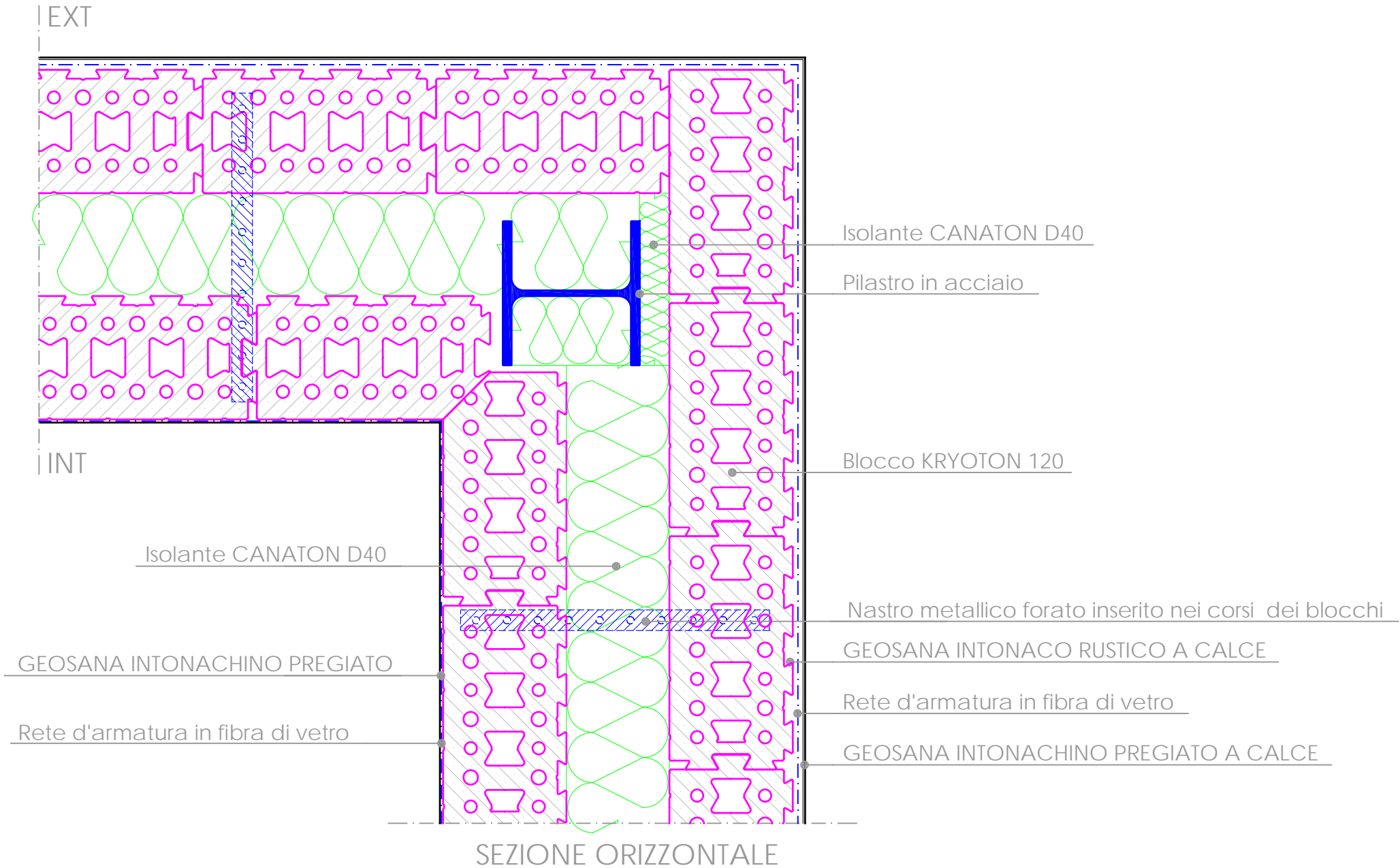
(REV.02-08/03/2019)



NODO PARETE-PILASTRO IN ACCIAIO



NODO PARETE-PILASTRO IN ACCIAIO

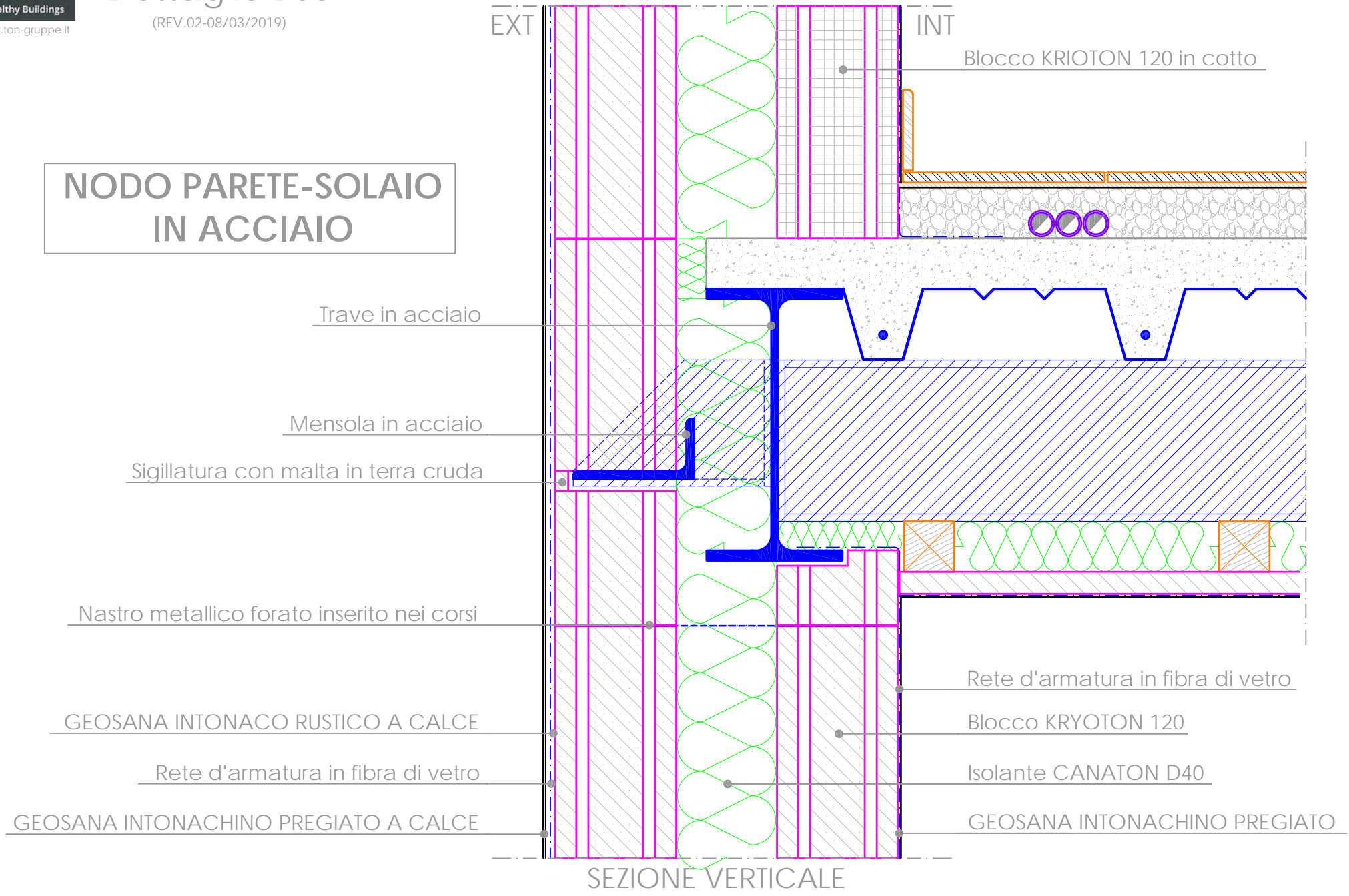


PARETE ATTIVA

Dettaglio B03

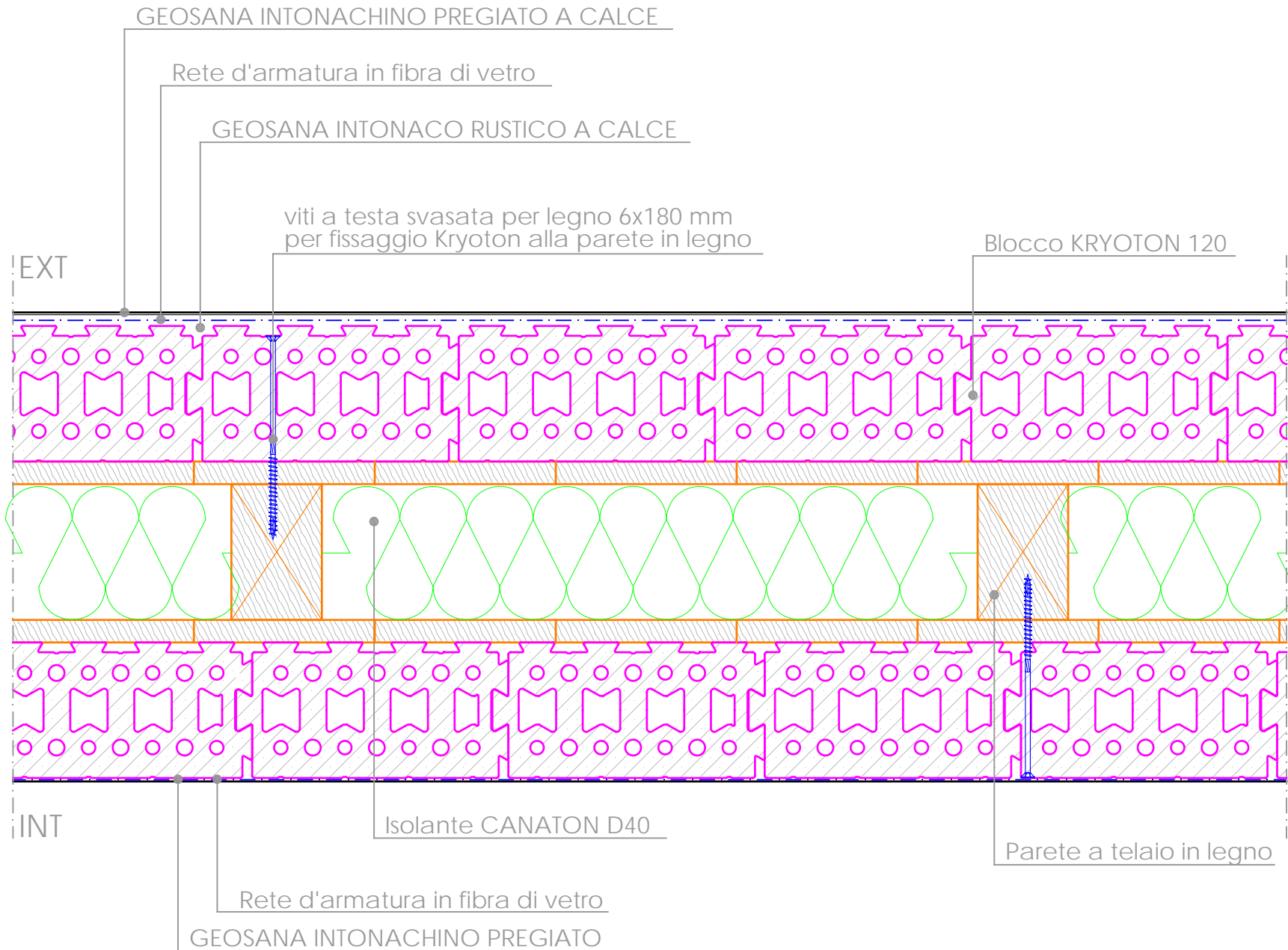
(REV.02-08/03/2019)

NODO PARETE-SOLAIO IN ACCIAIO

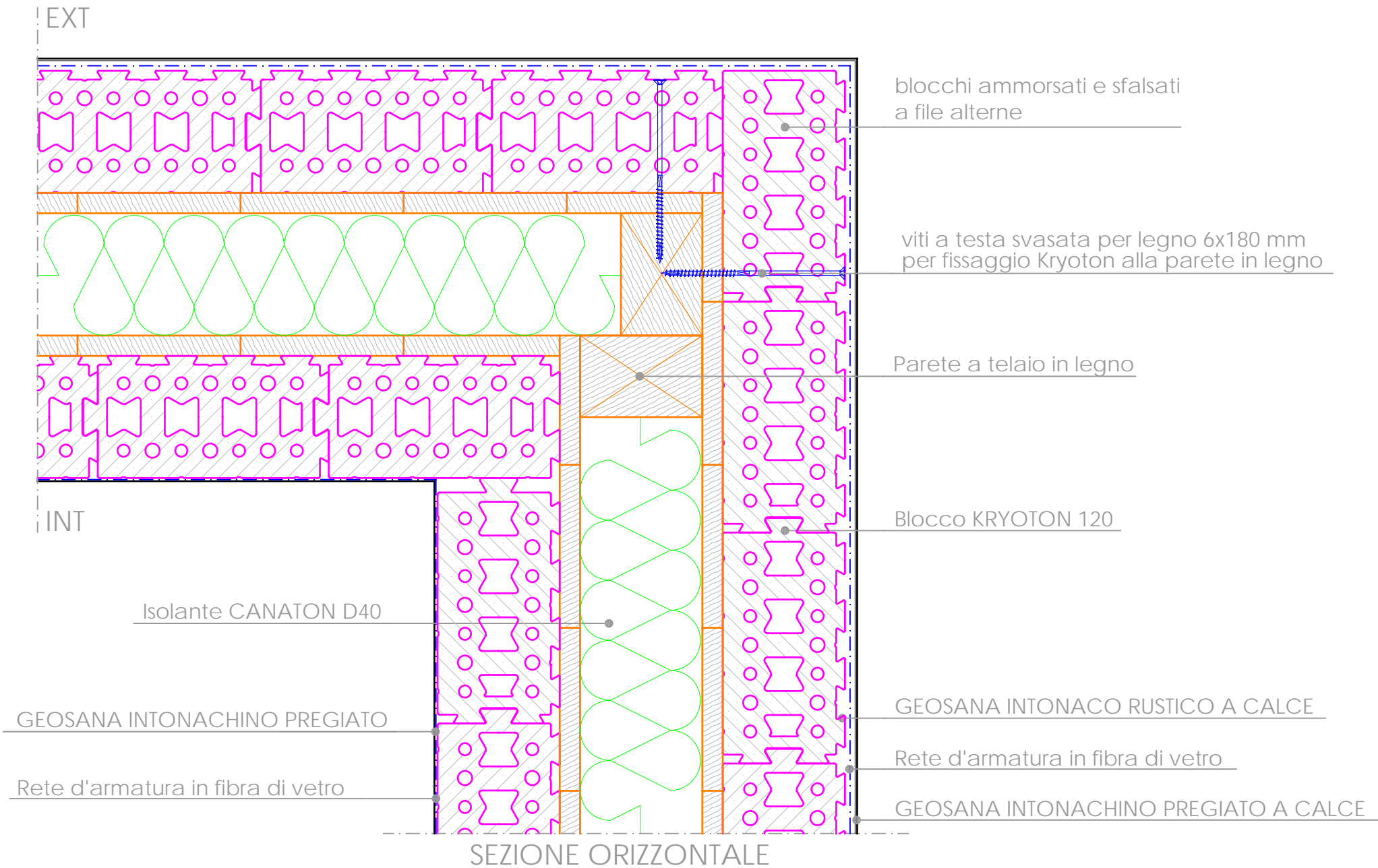


SEZIONE VERTICALE

NODO PARETE IN LEGNO



NODO PARETE IN LEGNO

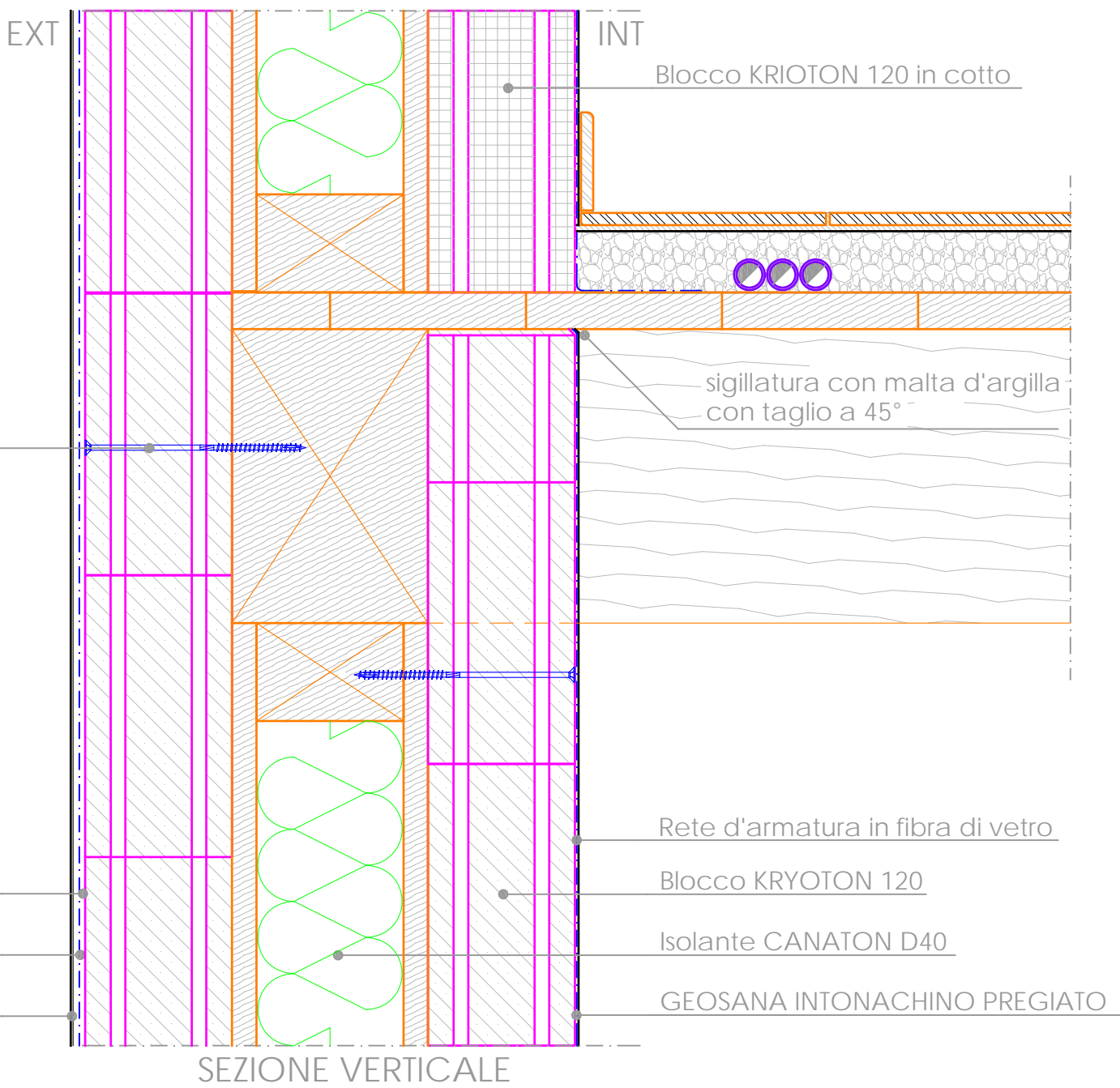


SEZIONE ORIZZONTALE

**NODO PARETE-SOLAIO
IN LEGNO**

viti a testa svasata per legno 6x180 mm
per fissaggio Kryoton alla parete in legno

GEOSANA INTONACO RUSTICO A CALCE
Rete d'armatura in fibra di vetro
GEOSANA INTONACHINO PREGIATO A CALCE



Blocco KRIOTON 120 in cotto

sigillatura con malta d'argilla
con taglio a 45°

Rete d'armatura in fibra di vetro

Blocco KRYOTON 120

Isolante CANATON D40

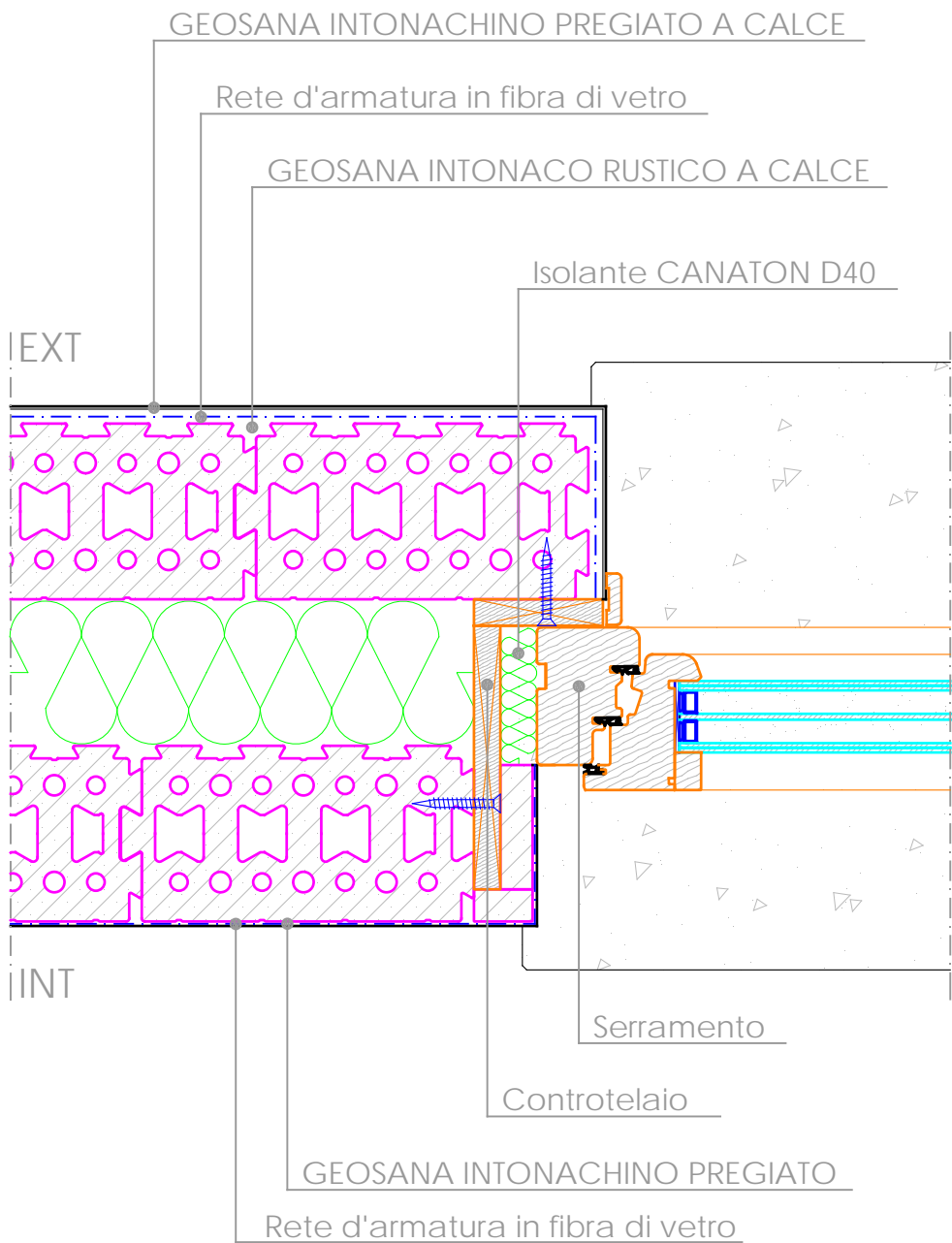
GEOSANA INTONACHINO PREGIATO

SEZIONE VERTICALE

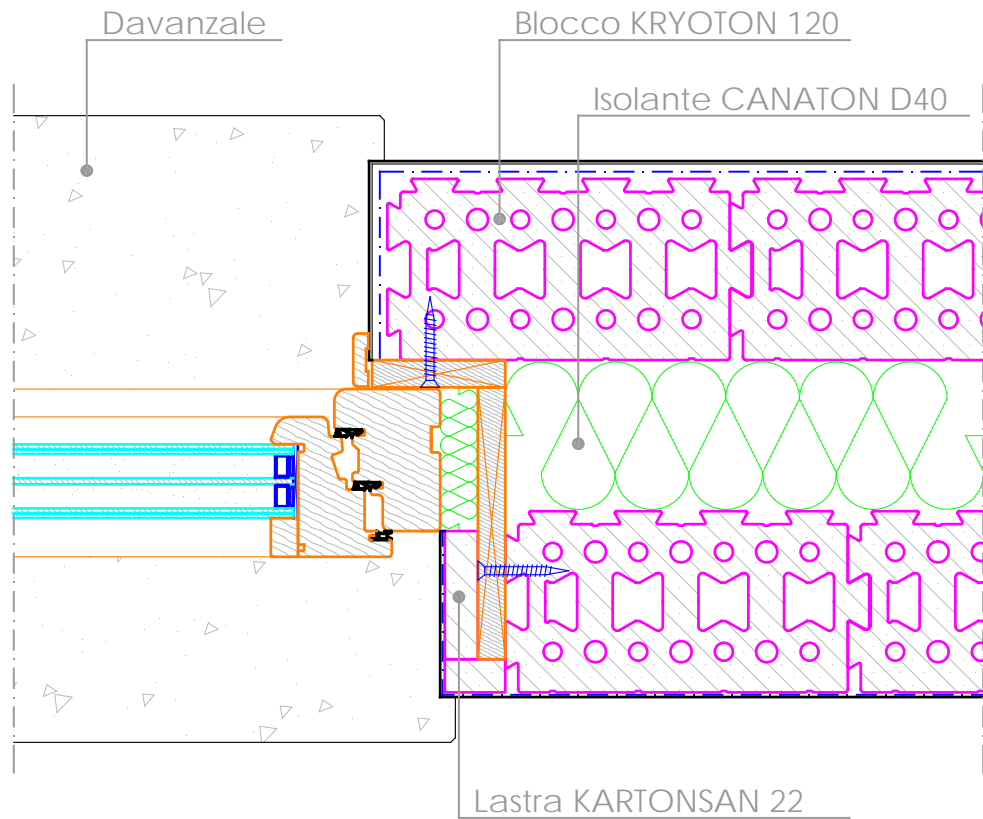
PARETE ATTIVA

Dettaglio D01

(REV.02-08/03/2019)

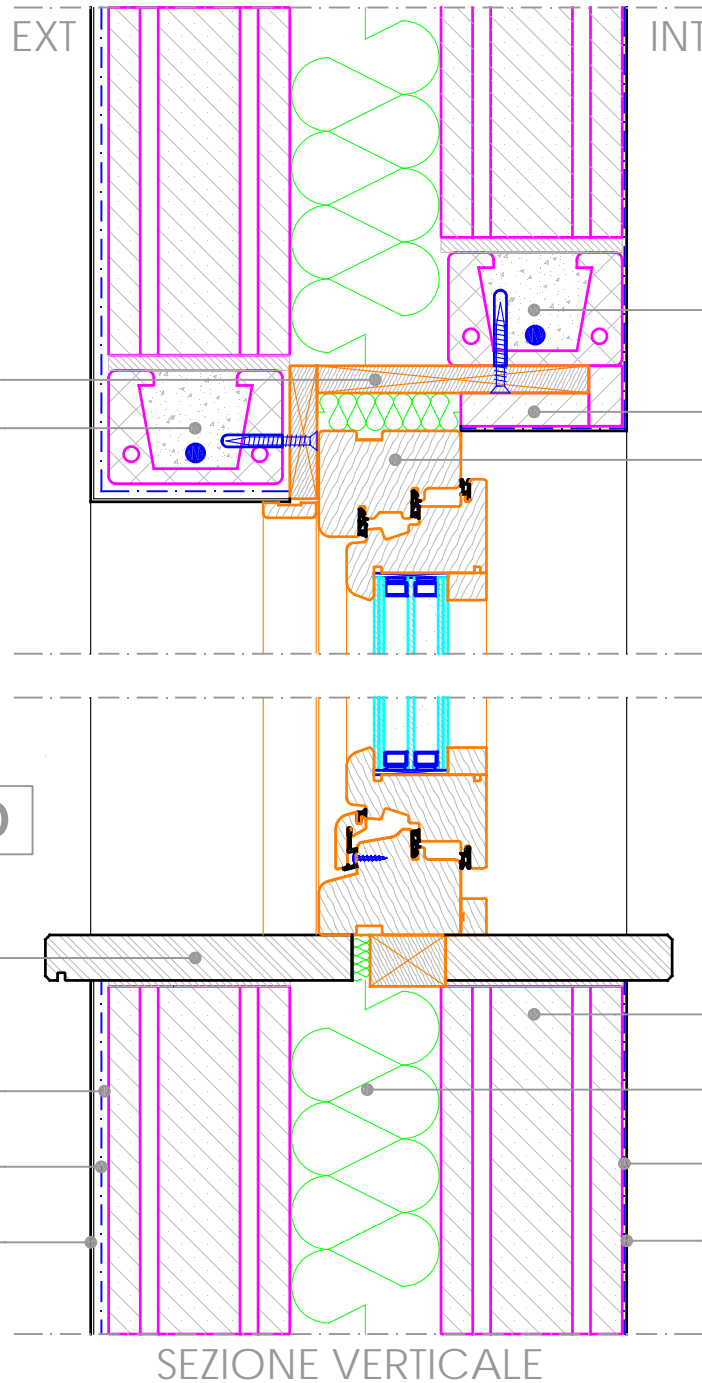


NODO PARETE-SERRAMENTO



SEZIONE ORIZZONTALE

PARETE ATTIVA
Dettaglio D02
(REV.02-08/03/2019)



Controtelaio
Architrave in laterizio

Architrave in laterizio
Lastra KARTONSAN 22
Serramento

NODO PARETE-SERRAMENTO

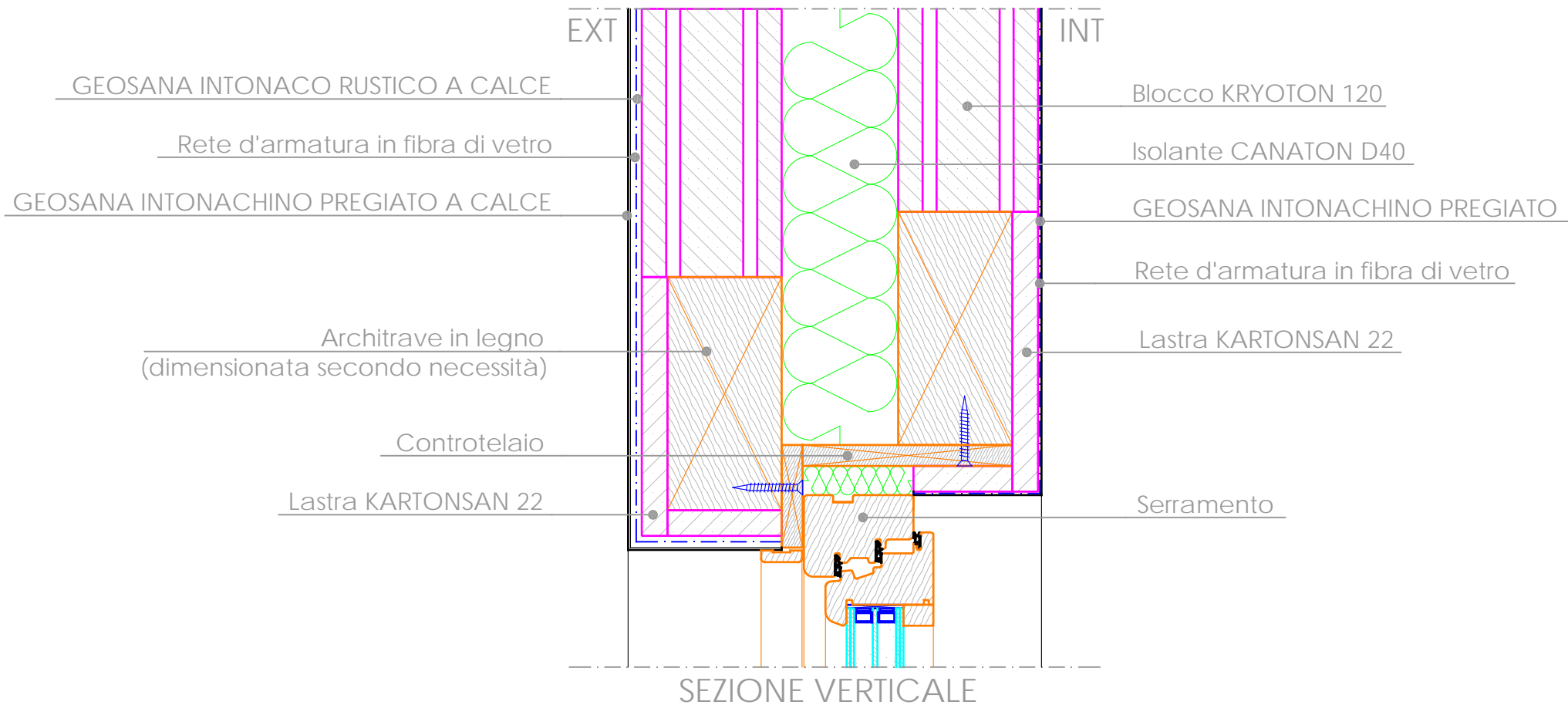
davanzale

GEOSANA INTONACO RUSTICO A CALCE
Rete d'armatura in fibra di vetro
GEOSANA INTONACHINO PREGIATO A CALCE

Blocco KRYOTON 120
Isolante CANATON D40
GEOSANA INTONACHINO PREGIATO
Rete d'armatura in fibra di vetro

SEZIONE VERTICALE

**ARCHITRAVI PER LUCI DI
GRANDE DIMENSIONE**



**ARCHITRAVI PER LUCI DI
GRANDE DIMENSIONE**

