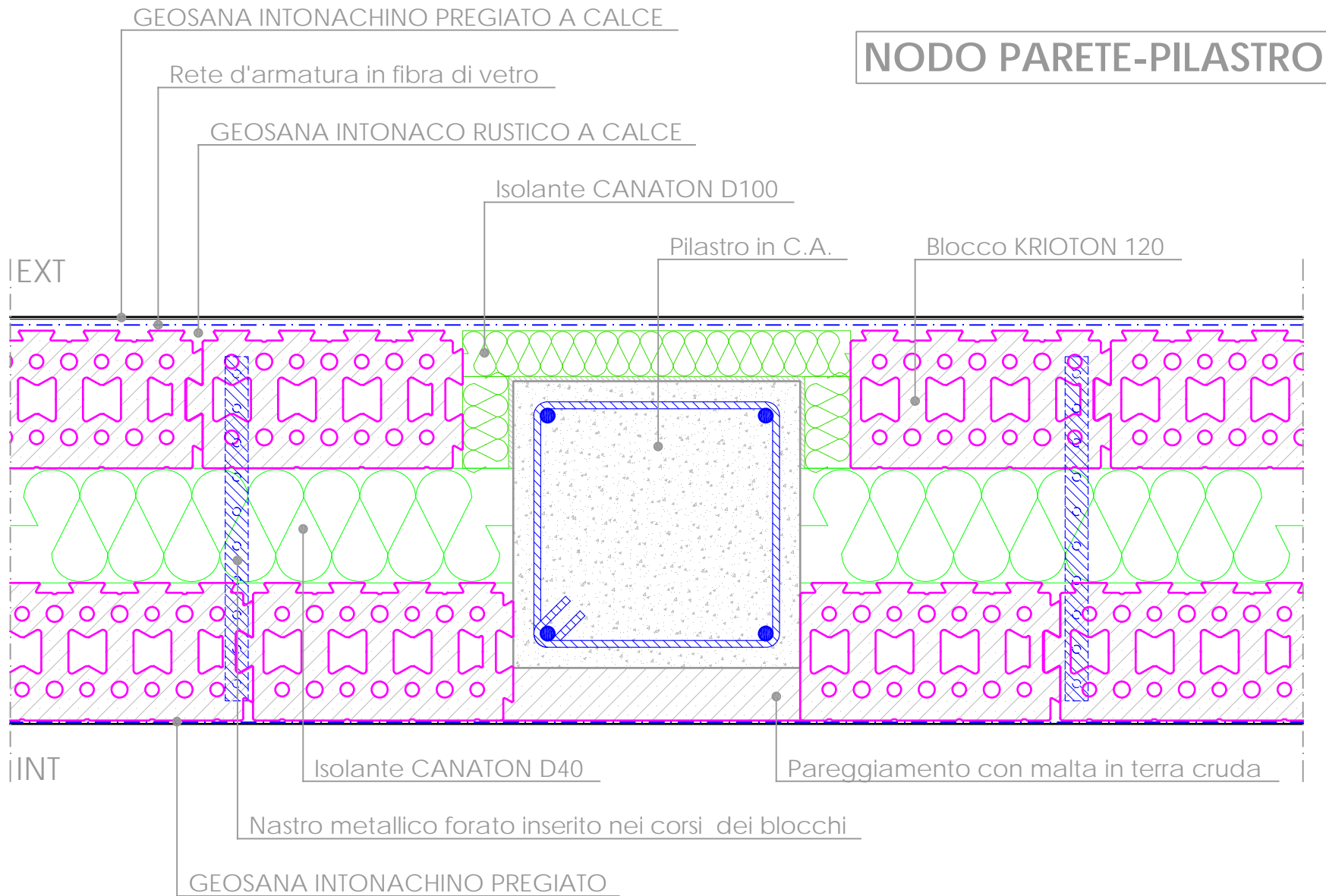
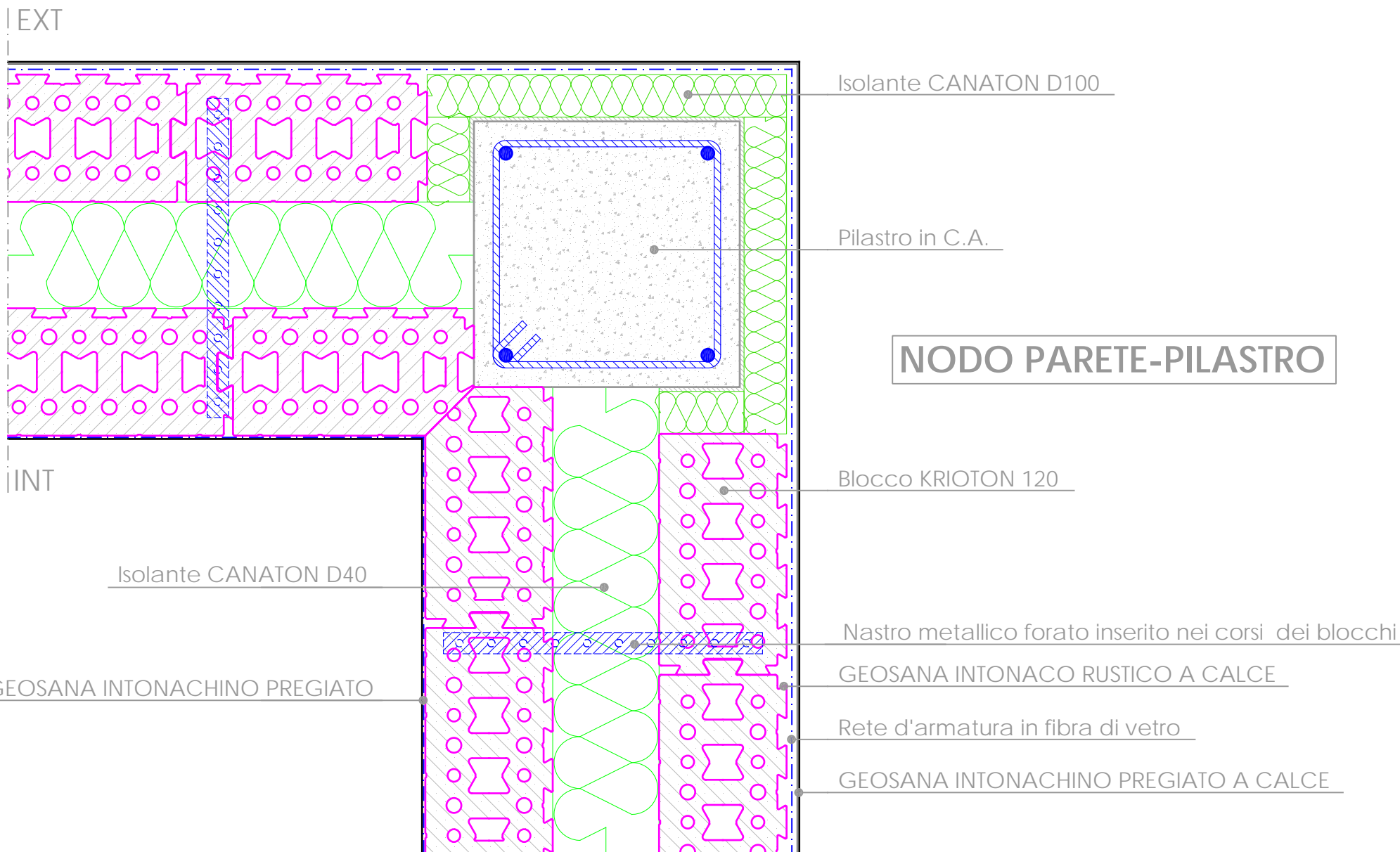


# PARETE ATTIVA

## Dettaglio A01

(REV.01-05/02/2018)



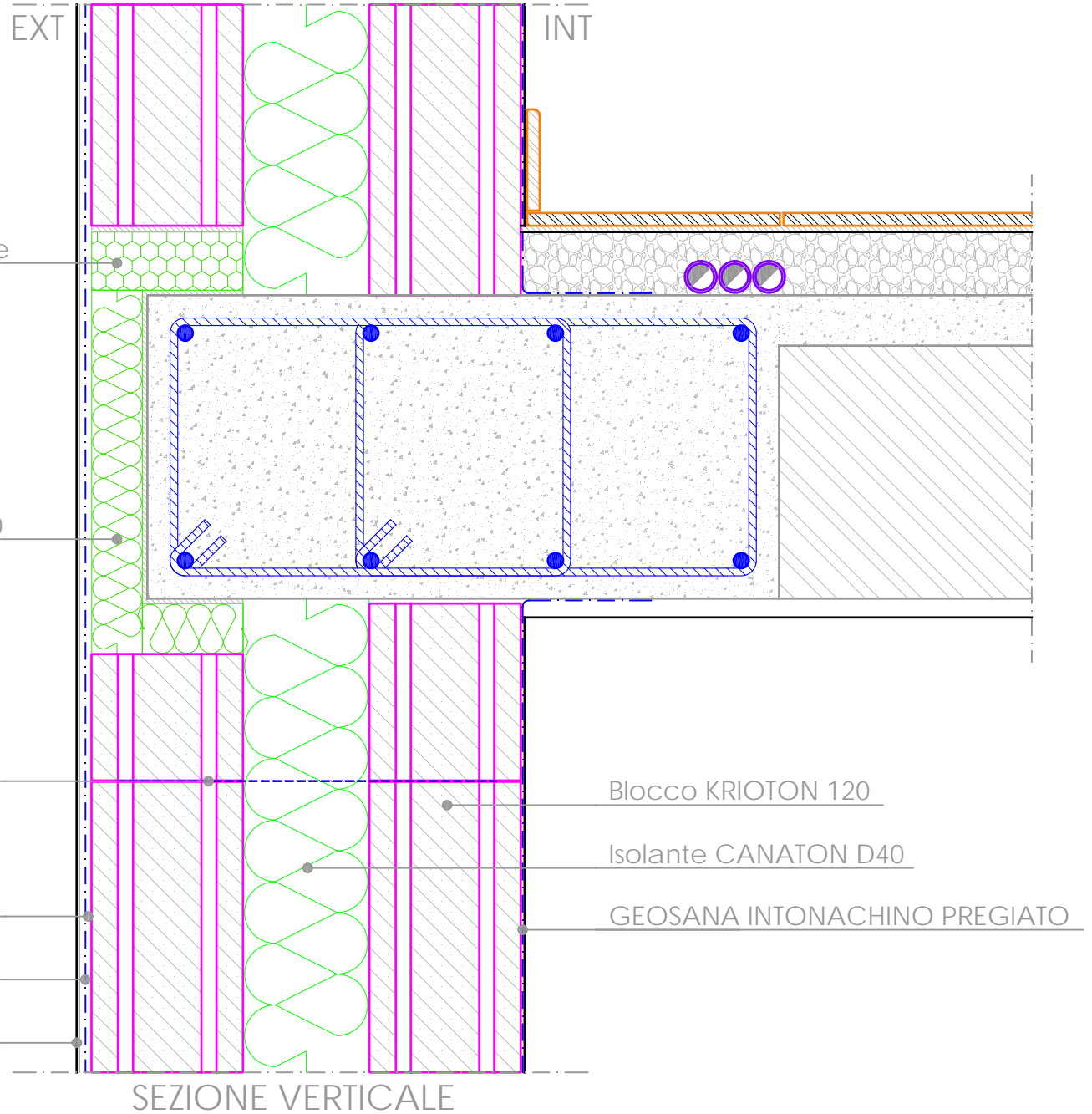


SEZIONE ORIZZONTALE

# PARETE ATTIVA

## Dettaglio A03

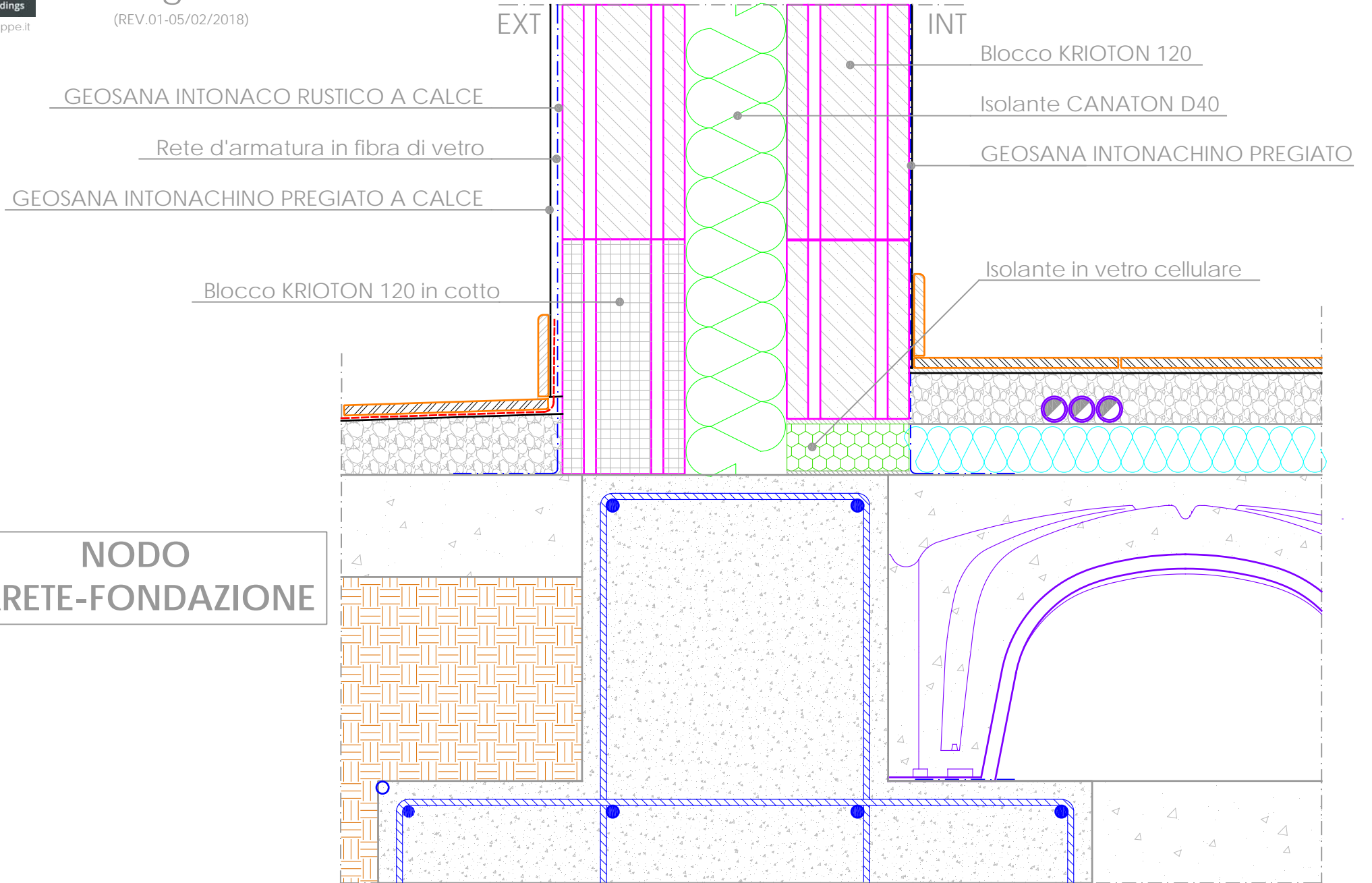
(REV.01-05/02/2018)



# PARETE ATTIVA

## Dettaglio A04

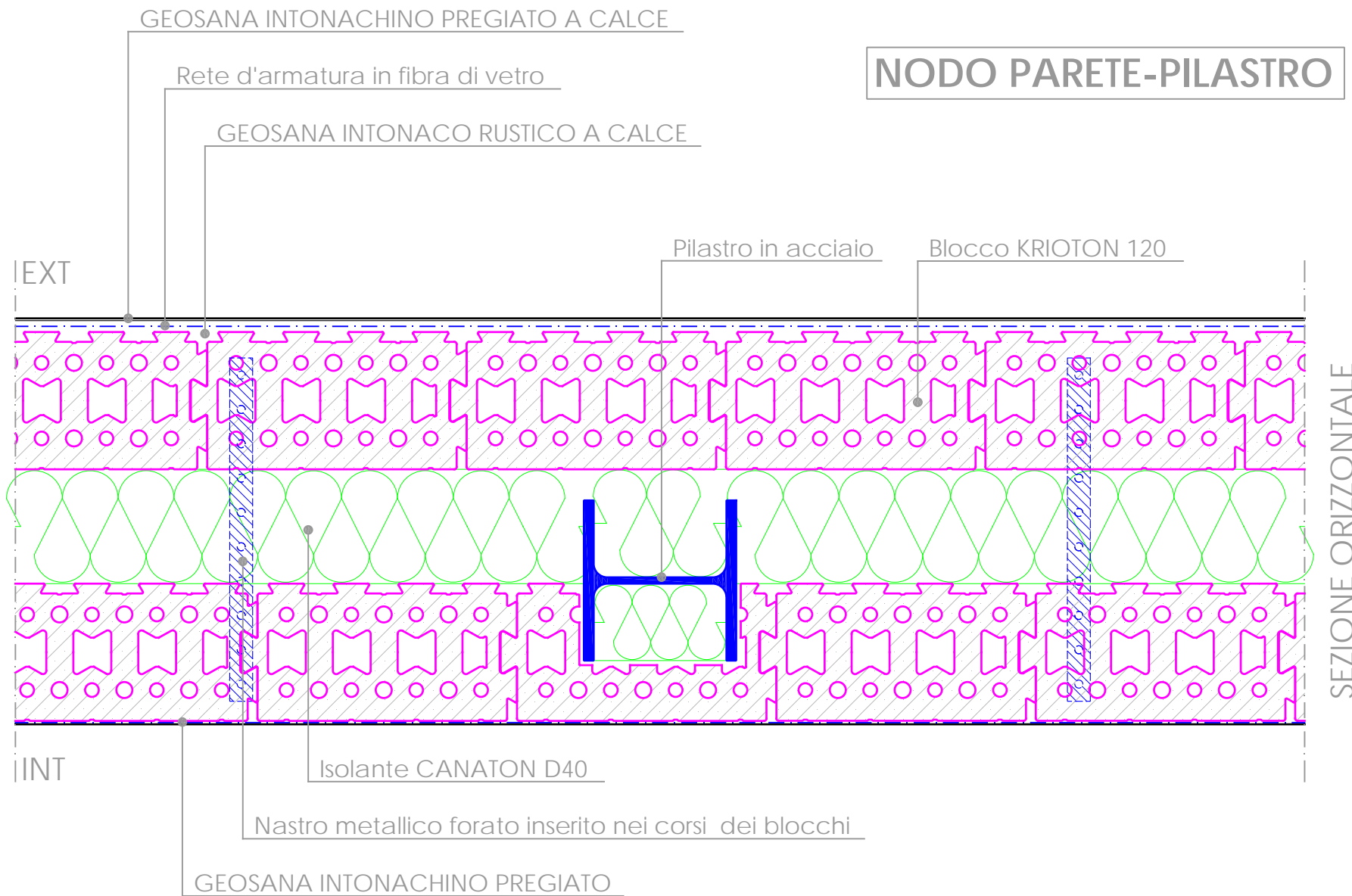
(REV.01-05/02/2018)



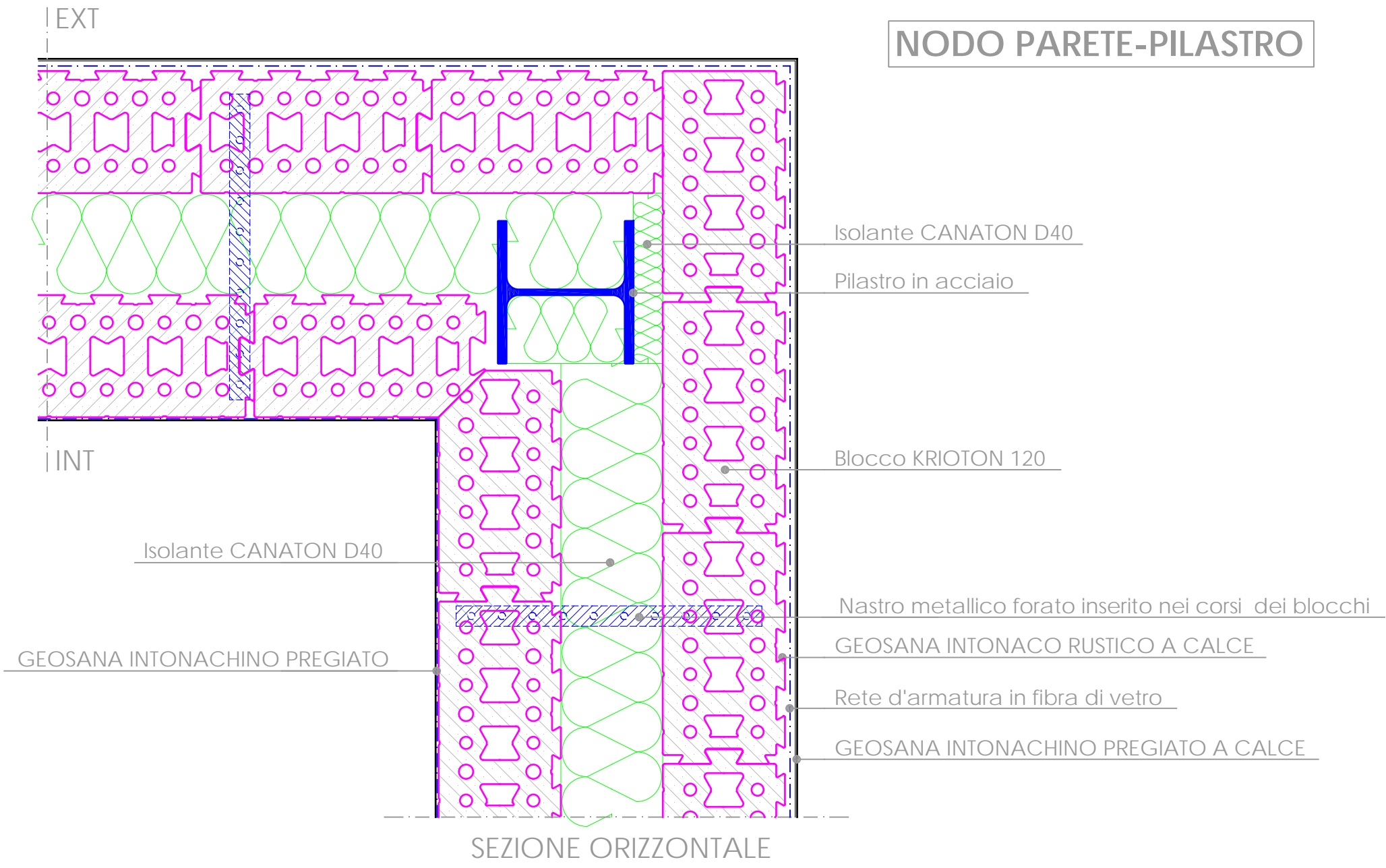
# PARETE ATTIVA

## Dettaglio B01

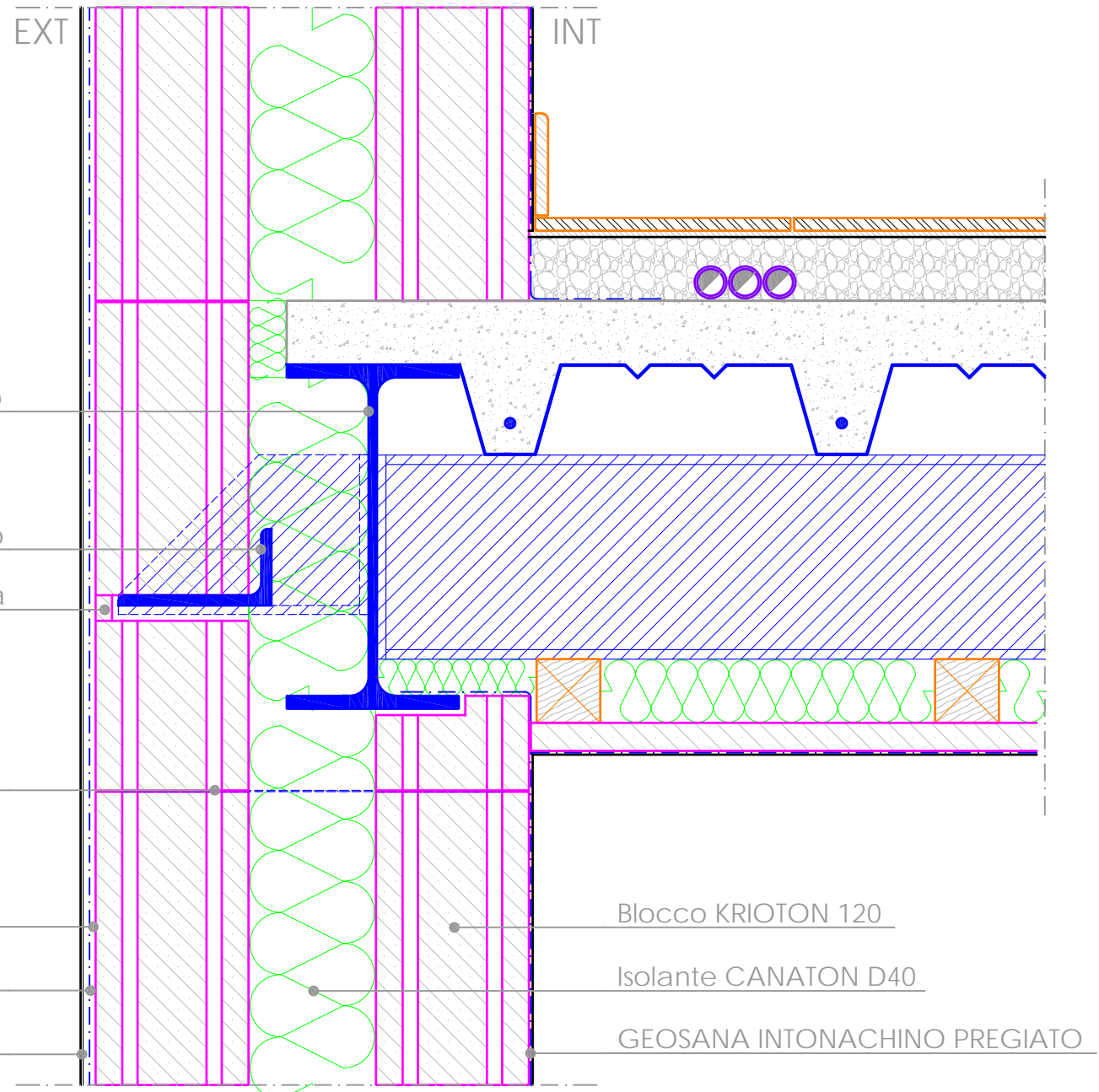
(REV.01-05/02/2018)



### NODO PARETE-PILASTRO



**NODO PARETE-SOLAIO**



Trave in acciaio

Mensola in acciaio

Sigillatura con malta in terra cruda

Nastro metallico forato inserito nei corsi

GEOSANA INTONACO RUSTICO A CALCE

Rete d'armatura in fibra di vetro

GEOSANA INTONACHINO PREGIATO A CALCE

INT

Blocco KRIOTON 120

Isolante CANATON D40

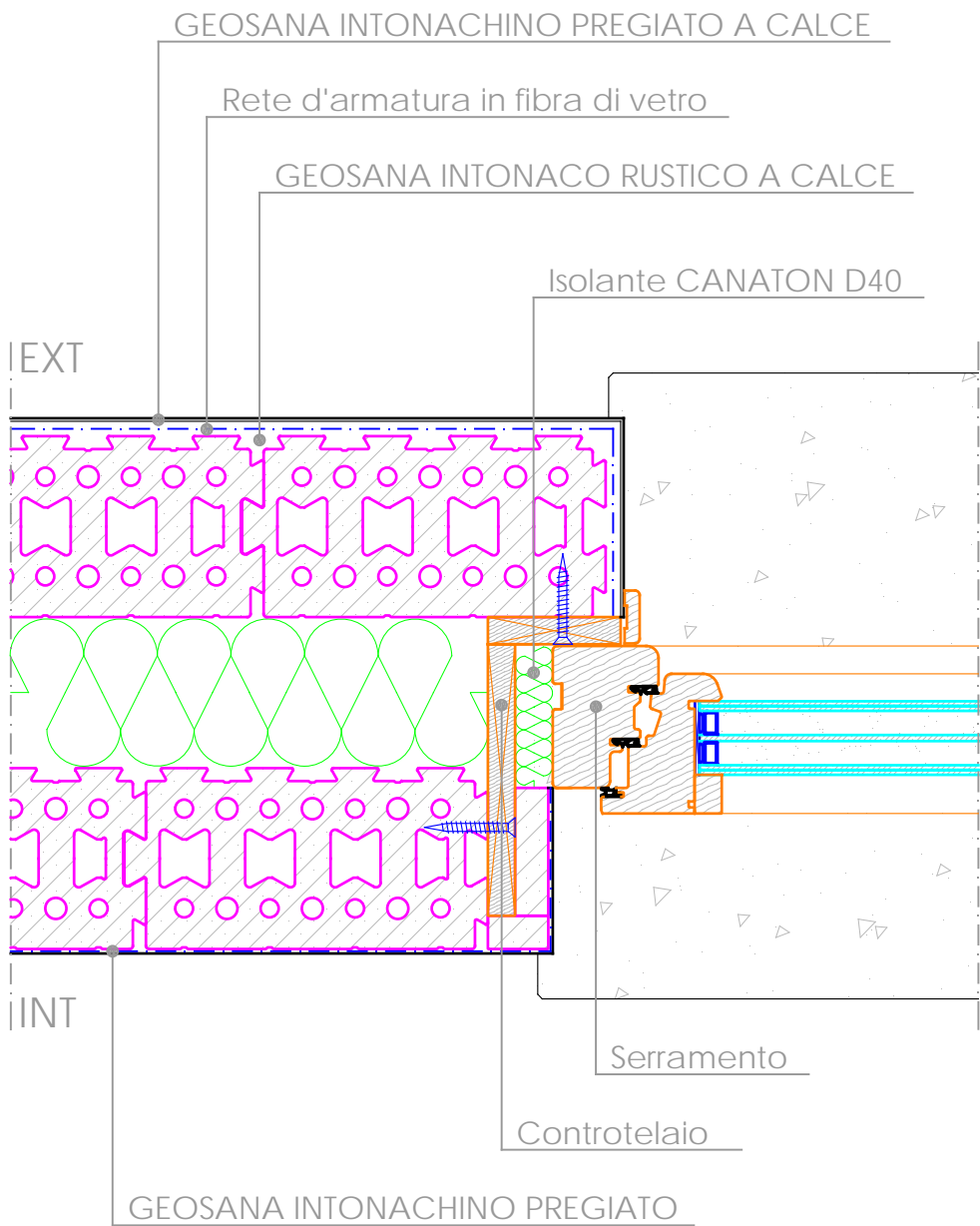
GEOSANA INTONACHINO PREGIATO

SEZIONE VERTICALE

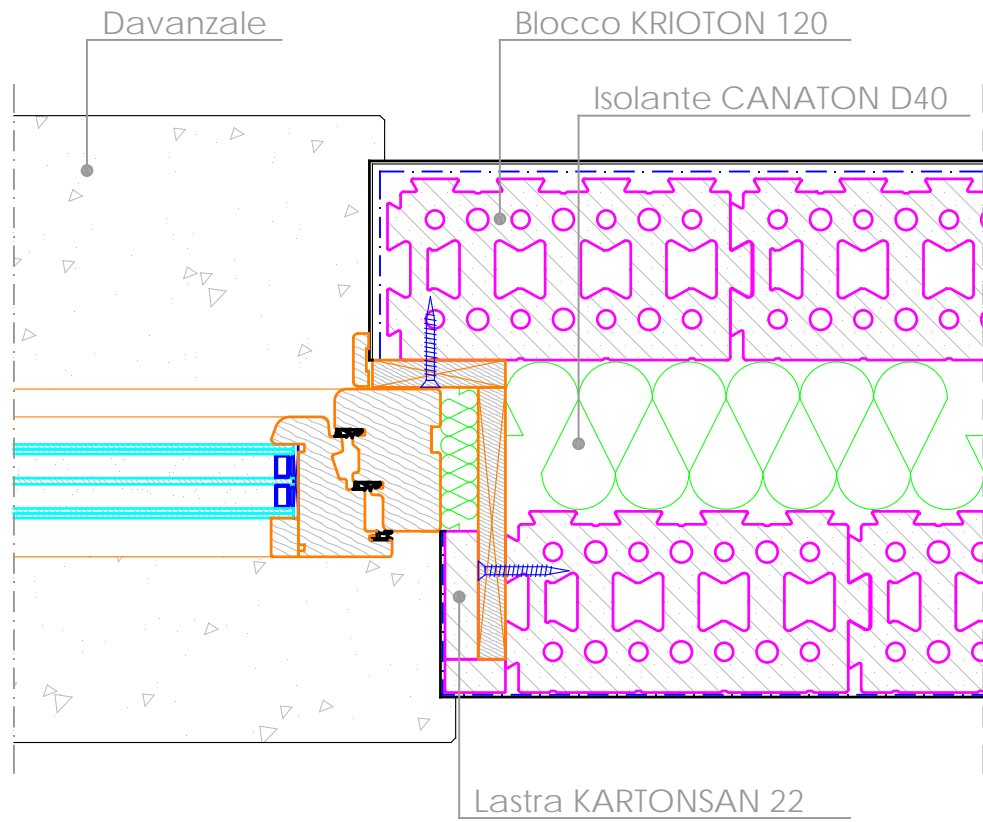
# PARETE ATTIVA

## Dettaglio C01

(REV.01-05/02/2018)



### NODO PARETE-SERRAMENTO



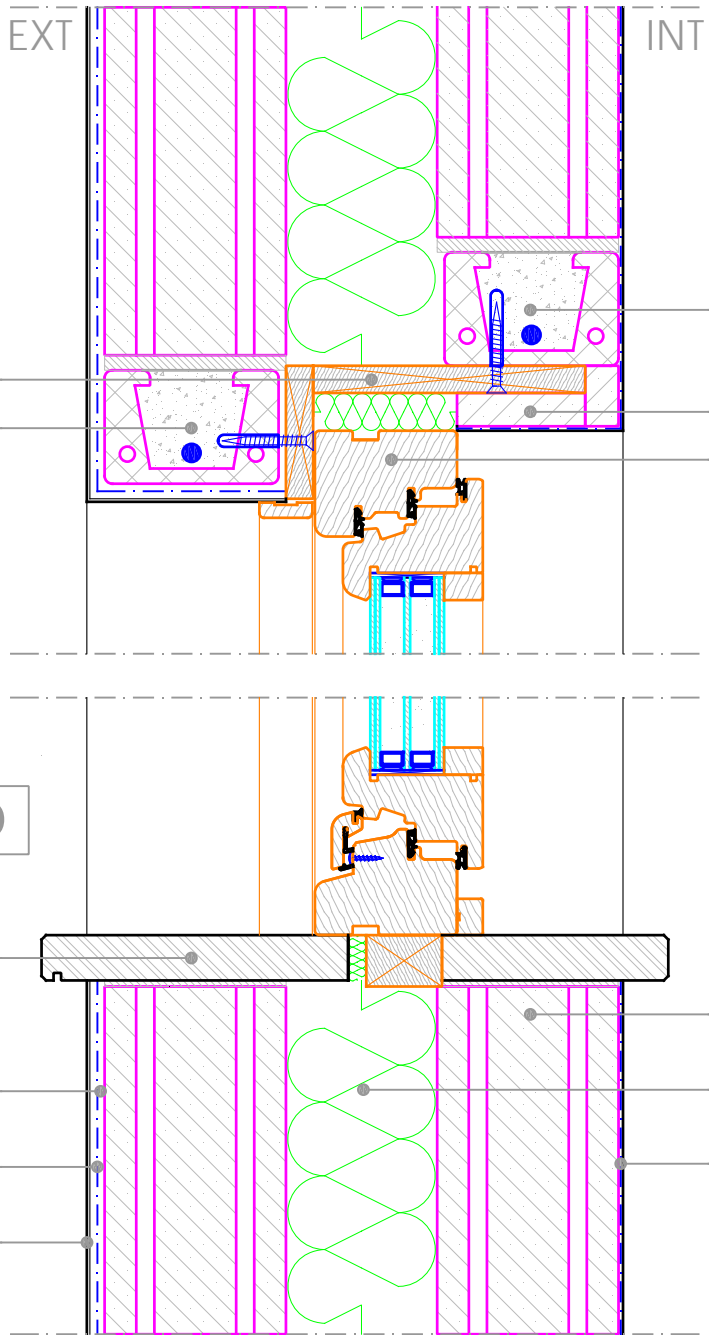
SEZIONE ORIZZONTALE



# PARETE ATTIVA

## Dettaglio C02

(REV.01-05/02/2018)



### NODO PARETE-SERRAMENTO

- Controtelaio
- Architrave in laterizio
- Architrave in laterizio
- Lastra KARTONSAN 22
- Serramento
- davanzale
- Blocco KRIOTON 120
- Isolante CANATON D40
- GEOSANA INTONACO RUSTICO A CALCE
- Rete d'armatura in fibra di vetro
- GEOSANA INTONACHINO PREGIATO A CALCE
- GEOSANA INTONACHINO PREGIATO

SEZIONE VERTICALE